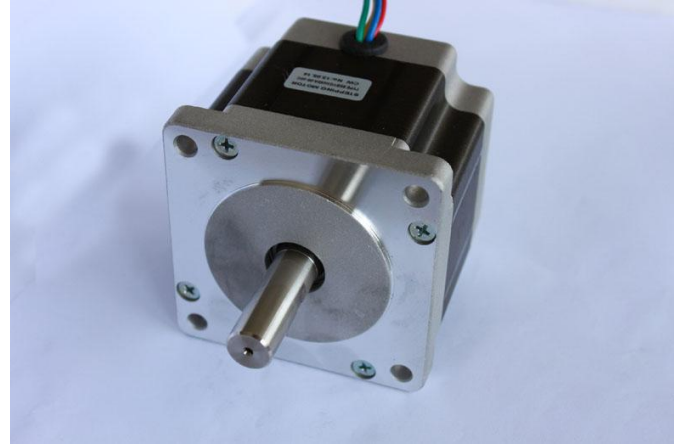


### 1.8° Nema 34 (Size 86 mm) Hybrid Motors

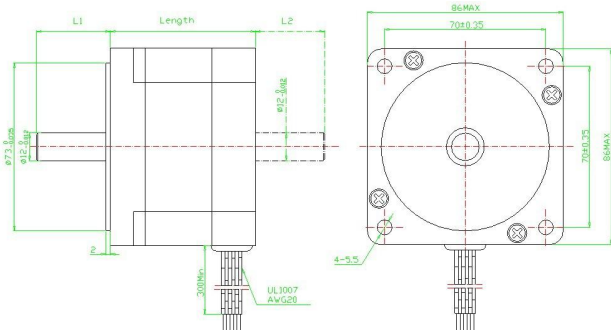
• **General Specification for Hybrid Step Motors**

Item	Specifications
Step Angle Accuracy	±5% (full step, no load)
Resistance Accuracy	±10%
Inductance Accuracy	±20%
Temperature Rise	80°C Max
Ambient Temperature	-20°C~+50°C
Insulation Resistance	100MΩ.,500VDC
Dielectric Strength	500VAC for one minute
Shaft Radial Play	0.02Max(450g-load)
Shaft Axial Play	0.08Max(450g-load)
Insulation Class	Class B

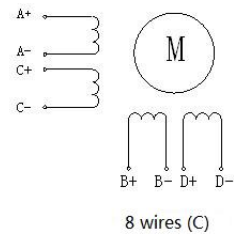
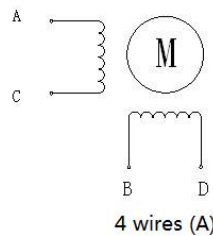


### Motor Specification

Model No.		Rated Voltage	Current	Inductance	Resistance	Holding Torque		Weight	No.of leads	Rotor Inertia	Length
Signal shaft	Double Shaft	V	A	mh	Ω	Oz-in	Kg-cm	kg		g-cm2	mm
CS86H65-2808A	CS86H65-2808B	9.6	2.8	4.2	1.4	444	32	1.7	8	1000	65
CS86H65-3004A	CS86H65-3004B	3.75	3	7	1.25	472	34	1.7	4	1000	65
CS86H75-4004A	CS86H75-4004B	2	4.0	2.3	0.5	292	21	2.3	4	1400	75
CS86H80-5504A	CS86H80-5504B	2.1	5.5	4	0.45	625	45	2.3	4	1400	80
CS86H114-5004A	CS86H114-5004B	3	5	2.2	0.6	833	60	3.5	4	2100	114
CS86H114-6004A	CS86H114-6004B	2.04	6	3.5	0.34	1111	80	3.5	4	2100	114
CS86H118-4208A	CS86H118-4208B	4.24	4.24	6	1	833	60	3.8	8	2700	118
CS86H118-6004A	CS86H118-6004B	3.6	6	6.5	0.6	1208	87	3.8	4	2700	118
CS86H156-4208A	CS86H156-4208B	6.3	4.2	10	1.5	1528	110	5.4	8	4000	156
CS86H156-6204A	CS86H156-6204B	4.65	6.2	9	0.75	1805	130	5.4	4	4000	156



Note: L1 and L2 can be customized



The motors are qualified with the CE certificate and ISO9001

The motors can be designed according to the customers requirement